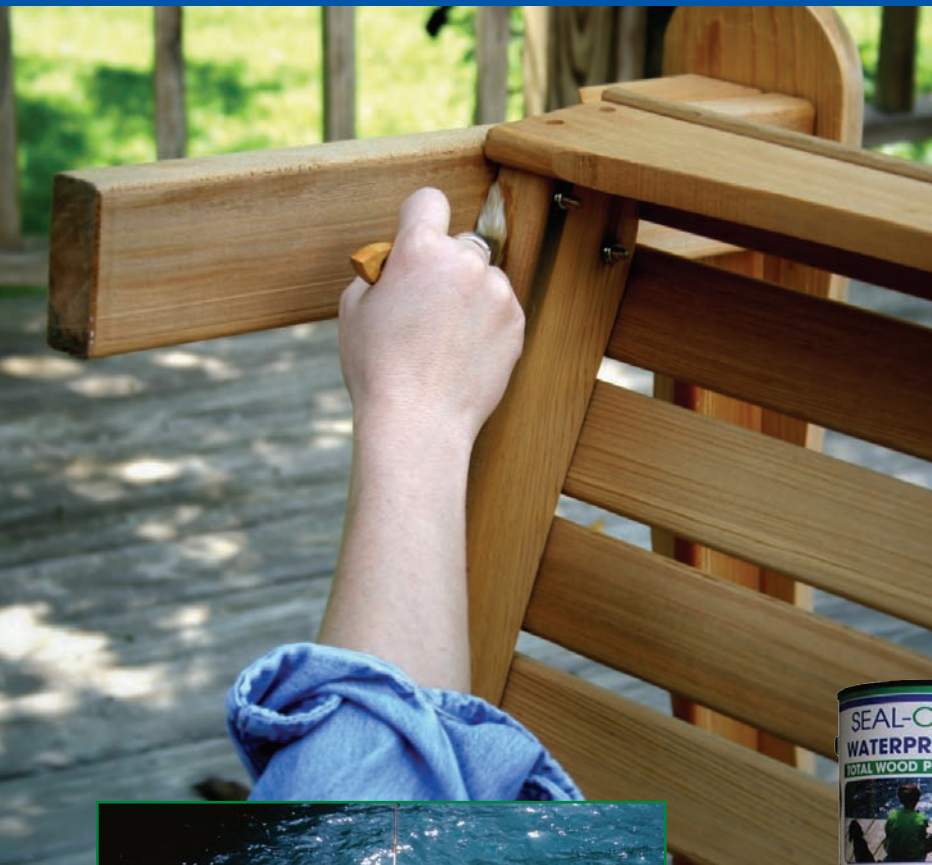


# The safest, longest lasting waterproofer for wood, masonry & concrete



## SEAL-ONCE™

### The Water Stops Here.

Seal-Once™ waterproofer for wood, exotic wood, concrete/masonry and composite decking beautify and protect against water, mold, mildew, spalling, cracking, splitting, salt intrusion and UV damage for up to 10 years! Seal-Once eco-friendly coating products are water-based, non-flammable and contain no VOCs, toxins or irritants. The advanced formula penetrates surfaces and bonds to form a superior barrier deep inside for the longest lasting protection available. Choose from clear or tinted formulas.



### Eco-Friendly • Non-Toxic

- Will not harm people, pets, or plants
- Water-based, non-flammable
- Safe for use over water
- Protects against UV, mold & mildew
- Can be painted or stained
- Odorless, will not burn skin
- Will not streak or discolor surfaces
- Easy soap & water clean up

### Save time and money!

Other waterproofer require regular re-application every 6 months to 1 year. Seal-Once™ guarantees protection for up to 6 years on horizontal surfaces & up to 10 years vertical!



# SEAL-ONCE™

## Product Benefits



### Wood Formulas

- ◆ Outperforms all wood stain and sealers on the market.
- ◆ Protects horizontal surfaces up to 6 years and counting. Vertical surfaces up to 10 years.
- ◆ Protects against mold, mildew, cracking, warping and splitting.
- ◆ Will not streak, yellow, nor change natural wood colors.
- ◆ Tinted formulas add color without hiding wood grain.
- ◆ Can be painted or stained after treatment
- ◆ Provides UV protection.
- ◆ Can be applied at 35°F and up.
- ◆ Easy soap & water clean up.

### Concrete/Masonry Formulas

- ◆ Outperforms all concrete/masonry water repellants.
- ◆ Protects horizontal surfaces up to 6 years and counting. Vertical surfaces up to 10 years.
- ◆ Protects against mold and mildew.
- ◆ Will not streak or yellow.
- ◆ Provides UV protection.
- ◆ Resistant to salt & chloride.
- ◆ Resistant to freeze/thaw.
- ◆ Reduces spalling.
- ◆ Can be applied at 35°F and up.
- ◆ Easy soap & water clean up.



## Health & Safety Features



- ◆ Water based & friendly to the environment.
- ◆ Will not harm fish, pets, livestock, plants or people.
- ◆ Does not contain chemicals that the State of California has determined causes cancer & birth defects or other harm.
- ◆ Does not contain volatile organic compounds (VOC's)
- ◆ Will not harm brain or nervous system.
- ◆ Approved by the State of New Hampshire.
- ◆ Non-toxic, non-flammable, non-combustible.
- ◆ Safe to use over fresh and salt water.
- ◆ Unused product can be stored safely in a basement or garage.

# Before you purchase your next waterproofer, compare labels.

## COMPETITORS' PRODUCTS -

Cabot's Deck Sealer, Behr's Waterproofer, Thompson's Water Seal Multi Surface, Sikken's Deck Sealer

Information below is taken directly from one or more of these competitors' labels.

### **Notice: Cancer Causing Chemicals**

This product contains a chemical known to the state of California to cause cancer and birth defects, or other reproductive harm.

### **Notice: Brain Damage**

Contains solvents which can cause permanent brain and nervous system damage.

### **Cautions**

- Flammable and combustible
- Contains petroleum distillates
- This product contains a maximum of 550 grams of Volatile Organic Compounds (VOCs)
- Wear a vapor respirator during spray applications

### **Surface Protection Period**

Clear stains: 1 year  
Other tinted stains: 2 to 4 years

### **Application Restrictions**

Do not apply when air or surface temperature is below 50°F or may fall below 50°F for 48 hours after application.

### **Streaking/Color Change**

If not applied carefully and evenly these products can streak. Some of these products cause a color change.

### **Clean Up/Disposal**

Clean brushes and containers with mineral spirits. Immediately after use place rags, steel wool or waste in a sealed, water filled, metal container.

### **Danger**

Rags, steel wool or waste soaked with decking stain may spontaneously catch fire if improperly stored.

### **Tinting**

Decking stains neutral base and deep base must be tinted with compatible universal colorant.

### **Other**

- These products contain petroleum distillates and VOCs and will harm fish, pets, livestock, plants and people.
- These products sit on the surface and wear away more quickly, requiring regular reapplication.
- These products leach out and will harm the environment.

# SEAL-ONCE™



### **Seal-Once**

Does not contain any chemicals known to the state of California to cause cancer and birth defects, or other reproductive harm.

### **Seal-Once**

Does not contain any solvents which can cause brain, nervous system or any other system damage.

### **Seal-Once**

- Non-flammable, non-combustible
- Does not contain petroleum distillates
- Contains zero Volatile Organic Compounds (VOCs)
- Wear a dust mask during spray applications

### **Seal-Once**

Clear: up to 6 years on horizontal surfaces;  
Clear: up to 10 years on vertical surfaces

### **Seal-Once**

Can be applied at any temperature above 35°F

### **Seal-Once**

Will not streak or change wood color to orange or any other color.

### **Seal-Once**

Clean brushes and containers with warm soapy water and reuse.

### **Seal-Once**

Non-flammable or combustible; Wash rags, steel wool, etc. in warm soapy water and reuse

### **Seal-Once**

Seal-Once tinted formulas are applied directly from the container.

### **Seal-Once**

- Will not harm fish, pets, livestock, plants or people when applied according to the label recommendations.
- Penetrates surfaces
- Seal-Once does not leach out or become hydrolytically unstable, therefore, it is safe to use over water.



## Concrete and Masonry Waterproof

	Seal-Once Waterbased Blend	Conproco Silane/Siloxane Waterbased Blend	Prosoco Silane/Siloxane Waterbased solvent base	Umaco Silane/Siloxane Water and Base	Dayton Superior Silane Water Solvent Compound	Euclid Super Diamond Clear Solvent Base Sealing Blend	Defy Silane/Siloxane Waterbased Blend
Non Toxic	✓						
Eco Friendly	✓						
Contains No Harmful VOC's	✓						
Supported by State Environment Agency	✓						
Penetrates Concrete Surfaces	✓		✓	✓	✓	✓	✓
Breathable	✓						
Apply to Damp Surface	✓						
Apply to Green Concrete	✓						
Odorless	✓						
Over apply	✓						
Respiratory Protection		✓	✓	✓	✓	✓	✓
Ventilation		✓	✓	✓	✓	✓	✓
Performance in Years up to 10 (Vertical)	✓						
Marine Product	✓						
Safe to Use Over Fresh or Salt Water	✓						
Can be Applied at 35° F/1.67° C	✓						
Can be Applied to Interior Surfaces	✓						
No Color Change Using Clear Formula	✓		✓	✓	✓	✓	✓
Will Not Streak	✓						
"Will Not Harm Fish, Pets, Plants or People"	✓						
Unused Portion Can Be Safely Stored In Home	✓						
Shelf Life Indefinite	✓						
Tints							
Stainable/Paintable After Treatment	✓						
Easy Clean Up with Soap and Water	✓	✓	✓	✓	✓	✓	✓
Protective clothing-gloves-eye protection		✓	✓	✓	✓	✓	✓
Slippery when spilled		✓	✓	✓	✓	✓	✓
Protect glass- metal-copper-rubber roofing		✓	✓	✓	✓	✓	✓
Safety Precautions		✓	✓	✓	✓	✓	✓
Non Combustible	✓						



# Product Comparison Matrix

	<u>Seal-Once</u>	<u>Cabot</u>	<u>Thompsons</u>	<u>Sikkens</u>	<u>Olympic</u>	<u>Behr</u>
Contains No Harmful VOC's	✓					
Non Toxic	✓					
Eco Friendly	✓					
Non Combustible	✓					
Supported by State Environment Agency	✓					
Performance in Years	<b>up to 10</b>	2	2	6	2	2
Penetrates Wood Surfaces	✓					
Marine Product	✓					
Tints	<b>8</b>	Yes	Yes	Yes	Yes	Yes
Safe to Use Over Fresh or Salt Water	✓					
Stainable/Paintable After Treatment	✓					
Easy Clean Up with Soap and Water	✓					
Can Be Applied at 35°F/ 1.67°C	✓					
Can be Applied to Interior Surfaces	✓					
No Color Change Using Clear Formula	✓					
Will Not Streak	✓					
Will Not Harm Fish, Pets, Plants or People	✓					
Will Not Cause Cancer	✓					
Will Not Cause Brain Damage	✓					
Will Not Cause Birth Defects	✓					
Will Not Cause Nervous System Damage	✓					
Will Not Spontaneously Explode	✓					
Unused Portion Can Be Safely Stored in Home	✓					

### PRODUCT NAME

Seal-Once™ Advanced Multi-Surface Waterproofer;  
Commercial/Industrial Grade Concentrate

### MANUFACTURER

New Image Coatings, LLC.  
150 Dow Street  
Manchester, NH 03101  
603-669-8786 • Fax 603-669-9048  
www.seal-once.com  
email: products@seal-once.com

### PRODUCT DESCRIPTION



#### BASIC USE

Seal-Once Advanced Multi-Surface Waterproofer is a concentrated, water-based, deep-penetrating formula designed primarily for waterproofing wood, composite wood, concrete and masonry surfaces. Seal-Once is designed to be

diluted with clean water for each part of concentrate at a 1:1 ratio.

Seal-Once provides up to 10 years of protection and does an exceptional job of limiting moisture ingress, as well as reducing fungal and microbial attack by reducing available moisture. Seal-Once is colorless and will not discolor wood, concrete or masonry. Seal-Once is available in clear and tinted colors.

Seal-Once does not contain mercury, heavy metals or silica. There is an internal chemistry which is designed to facilitate bonding to wood and cementitious substrates. When Seal-Once dries in a substrate, it does not leach out or become hydrolytically unstable. It may be painted over as soon as it dries.

It may be used below grade as a first application before topping with a waterproof coating recommended for below-grade application. Seal-Once cannot be used to prevent hydrostatic pressure (active leaks or continually damp areas).

### FEATURES & BENEFITS

- Can be applied on interior or exterior surfaces
- Contains no harmful VOC's
- Non flammable, water-based formula
- Non toxic
- Can be applied at temps down to 35°F
- UV Stable
- Green Spec® listed
- Supported by NH Dept of Environmental Services Division
- Protects against mold and mildew
- Reduces spalling and cracks caused by moisture
- Will not discolor wood or masonry surfaces
- Resistant to salts and chlorides
- Safe for use over fresh or salt water
- Paintable and stainable
- Will not harm fish, pets, plants or livestock
- Use marine formulas on or near water

### PHYSICAL CHARACTERISTICS AND CHEMICAL PROPERTIES

<b>Color</b>	Milky White
<b>Flash Point</b>	None
<b>pH</b>	7.2
<b>Application Temp.</b>	35° F +
<b>Odor</b>	Very low
<b>Boiling Point</b>	>100° C (>212°F)
<b>Specific Gravity</b>	1.04 g/cm <sup>3</sup>
<b>Water Solubility</b>	(Miscible)
<b>Solvents</b>	None
<b>Solid Content</b>	32%
<b>VOC's</b>	No Regulated VOC's
<b>Air Pollutants</b>	None

# APPLICATION INSTRUCTIONS

## PREPARATION

- All surfaces should be cleaned before sealing for best penetration and performance. Clean all dust, debris and loose material. Remove oil, grease, algae, grime, mildew or mold with appropriate cleaners.†
- After cleaning, test absorbency of surface by sprinkling a few drops of water on the surface. If the water does not readily penetrate the surface, stripping will be necessary to remove old coatings prior to applying product. Retest surface after dry.†
- Can be used on green concrete.
- Allow pressure-treated wood to age up to six months before applying Seal-Once.

## APPLICATION

- Do not use if air or surface temperature is below 35°F.
- Do not apply in rain or when rain is imminent.
- Combine equal parts Seal-Once and clean water (1:1 ratio). Use a paint stick or jiffy mixer and mix for one minute. DO NOT THIN.
- Apply two even coats with garden sprayer, brush, air-assisted and/or airless sprayer. Use medium spray pattern. Apply second coat while first coat is still damp.
- For best results, apply in the evening, out of direct sunlight, and at cooler temperatures.
- When applying in direct sunlight and surface is hot, spray with a mist of water and apply Seal-Once immediately on dampened surface.
- For wood: apply to top surface, sides and ends.
- Do not use with other waterproofing products.
- An additional coat may be needed on dry, porous surfaces. In high traffic areas on wood, application may be necessary every 2-4 years only in worn areas.
- Can be stained or painted after Seal-Once is cured.

## COVERAGE

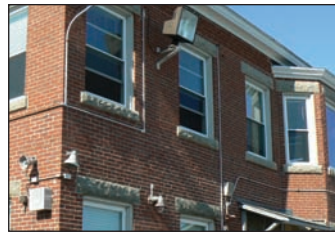
- Approximate coverage: 200-300 sq. ft./gallon per coat mixed. Two coats required. Actual coverage will vary due to porosity of surface.

## DRYING TIME

- Wood/composite surfaces: Allow water to evaporate before subjecting surface to light foot traffic; 24-48 hours for full cure, depending on temperature and humidity.
- Concrete/masonry surfaces: Allow surface to dry 1-2 hours depending on temperature and humidity.
- When recoating, apply as soon as previous coat has penetrated the surface.

## CLEAN UP

- Clean equipment and brushes with warm, soapy water.
- Store above 32°F; protect from freezing.



## GENERAL COVERAGE GUIDELINES

Material Surface	Coverage (sq. ft./gal, mixed)*
Concrete Broom or Brush Finish	200
Concrete Block	200
Brick	300
Stucco	200-300
Slate/Granite/Limestone	300
Unglazed Tile	300

\* Actual coverage will vary depending on porosity of materials.

## RECOMMENDED USES

<b>Wood (all types)</b>	Decks, Fences, Docks, Piers, Shingle Siding, Wood Playgrounds,
<b>Composite</b>	Planters, Furniture, Cedar Siding, Roofs
<b>Concrete</b>	Walkways, Driveways, Curbs, Steps, Platforms, Loading Docks, Ramps, Floors, Parking Decks, Chimneys, Retaining Walls, Pool Decks
<b>Other</b>	Stucco, Brick, Tile (Unglazed), Granite, Limestone, Slate, Gravestones

## TINTED FORMULAS

Seal-Once fade-resistant semi-transparent tints mix easily into our basic formulas to add color and depth to surfaces while providing superior protection. Note: Not all tints are recommended for concrete/masonry. For best results on concrete/masonry use either slate gray or mahogany.



Color swatches are approximate.

† Sanding or removal of paint containing lead may be hazardous. Call 1-800 424-LEAD for details.

## TEST RESULTS

### Test: Absorption and Density of Concrete and Masonry

Tested by: Group CTT-Div Sageos  
Date: February 28 to March 3, 2006  
Method: ASTM C140-02A Section 8  
Results: Concrete mega-pave & permacon products treated with Seal-Once & submerged in water had an average absorption rate of 1.24%. Outstanding results.

### Test: Scaling Resistance of Concrete Surfaces Exposed to Deicing Chemicals (Freeze/Thaw Tests)

Tested by: Group CTT-Div Sageos  
Date: March 2 to April 21, 2006  
Method: ASTM C 672/c 672m-98  
Results: Seal-Once had a zero weight loss of scaling after 50 freeze/thaw cycles. This ASTM test result verifies that Seal-Once provides an excellent level of protection for cementitious substrates for many years.

### Test: Moisture Vapor Emission Rate of Concrete and Masonry

Tested by: Group CTT-Div Sageos  
Date: March 3, 2006  
Method: ASTM F1869-98  
Results: Seal-Once had a vapor emission rate of 3.9 average, while untreated reference blocks average 7.4. This means that moisture trapped within concrete or other substrates treated with Seal-Once will escape at a rate over 50% of that of raw concrete which is excellent.

### Test: Toxicity/Eco Friendliness

Tested by: Huther & Associates  
Dates: June and July 2003  
Method: EPA/600/4-90/027F-Aug. 1993  
Results: When applied according to label directions Seal-Once was found to be perfectly safe for fresh and saltwater applications. Seal-Once will not harm fish, pets, wildlife, wildfowl, livestock, flowers, bushes, etc.

### Test: Volatile Organic Compounds

Tested by: Granite State Analytical, Inc.  
Date: November 21, 2005  
Method: Volatile Organics Method 5035/8260B  
Results: No regulated VOC's were found. No regulated hazardous air pollutants were found.

### Test: Composite Decking ASTM Test Method for Microbial Growth (Mold & Mildew)

Tested by: ASTM International  
Dates: April 2007  
Method: ASTM D3274  
Results: Standard test method for evaluating degree of surface disfigurement of paint films by Microbial (Fungai or Algal) growth or soil and dirt accumulation. Pass 16 week test no growth.

### Test: Composite Decking ASTM Test Method for Microbial Growth (Mold & Mildew)

Tested by: ASTM International  
Dates: April 2007  
Method: ASTM D3273  
Results: Standard test method for resistance to growth of mold on the surface of interior coatings in an environmental chamber. Pass 16 week test, no growth.

### Test: Penetration – IPE Brazil/Trex/Correct Deck (Composite Decking)

Tested by: New Image Coatings  
Dates: April 2003  
Method: Brushed – 2 coat  
Results: Seal-Once clear penetrated composite decking. Absolutely no change in color. Seal-Once – Natural tint – applied IPE enhanced patina and added to richness.

For further information on test results refer to our website:  
[www.seal-once.com](http://www.seal-once.com).

## ADDITIONAL TECHNICAL INFORMATION

### Stability & Reactivity

- Conditions to Avoid - No known conditions of instability
- Hazardous Reactions - Hazardous polymerization is not known to occur.

### Disposal Considerations & Accidental Spills

- Discarded product is not a hazardous waste.
- Remove all product residue from container, clean with soap and water and reuse as desired.

### Transport Information

- Not regulated by the U.S. Dept of Transportation
- This product does not contain any chemicals subject to reporting requirements under the right to know At SARA Section 314

- This product does not contain any chemicals known to the state of California to cause cancer under California proposition

### Exposure Controls/Personal Protection

- Eye protection - Safety glasses with side shields
- Skin and body protection - Sensitive individuals should wear impervious gloves
- Respiratory Protection - Dust mask for sensitive individuals
- Hygienic Measures - Eyewash flush for eyes, soap and water for skin.

## FIELD TEST STUDY

### 1989 APPLICATION STUDY ON WOOD FENCE

Seal-Once Advanced Multi-Surface Waterproofer was applied to a southwest United States white pine fence in 1989 with a follow-up application in 1994. Season after season, the wood has been remarkably preserved. The clear formula reveals the natural gray patina, weathering without minimal cracking or warping of the wood.



## PRODUCT COMPARISON

### Seal-Once™ Advanced Multi-Surface Waterproofer

- Lasts up to 6 years on horizontal surfaces and up to 10 years on vertical surfaces.
- Environmentally safe, will not harm plants, pets, fish, livestock, humans. Contains zero volatile organic compounds (VOC). No toxic fumes.
- Seals and protects with two applications on most surfaces. Requires additional application(s) on extremely porous surfaces. Second coat can be applied as soon as first coat has penetrated.
- Can be applied to green concrete.
- Allows wood to age naturally in appearance.
- Cleans up with water.
- Paintable/stainable with latex or oil-based paints.
- High binding action for better adhesion/protection.
- Non-flammable, no special handling required.
- Milky white for more even application, dries clear.
- Dries on concrete/masonry within 1 hour
- Resistant to mold/mildew.
- Resistant to salts and chlorides.
- Helps prevent efflorescence.
- Penetrating, bonding sealer.
- Waterproofing sealer.

### Solvent-Based Water Repellents

- Lasts 6 months to 1 year on wood, and up to 10 years on concrete surfaces.
- Plants, pets, fish, livestock, humans will die if not protected. High in volatile organic compounds (VOC). Spray mask recommended during application. Proper ventilation required.
- Requires minimum of 2 applications at 48-hour intervals.
- Minimum 2 weeks wait for concrete to cure prior to application. Some solvents cause discoloration.
- Allows wood to age naturally in appearance.
- Requires solvents for clean up, some with water.
- Most cannot be painted over with latex paints.
- Little or no binding action.
- Highly flammable.
- Applies clear, hard to identify coverage.
- Dries on concrete in approximately 48-72 hours.
- N/A
- N/A
- N/A
- Surface repellent.
- Water repellent.

## NEW IMAGE COATINGS, LLC PERFORMANCE GUARANTEE

### LIMITED LIABILITY

Liability, whether expressed or implied, is limited to replacement of product or refund of purchase price if this product fails to prevent ingress of moisture when used according to label instructions. Liability cannot include labor costs or consequential damages. Liability cannot be modified or extended by manufacturer's representatives, distributors or dealers of New Image Coatings, LLC products.

8/10/2011



MADE IN THE U.S.A.  
MANUFACTURED BY  
NEW IMAGE COATINGS, LLC.  
MANCHESTER, NH 03101  
603-669-8786  
www.seal-once.com

### Does Seal-Once prevent mold and mildew on wood, composite decking and concrete?

**Problem:** Wood, composite decking or concrete that has been saturated with water over time develops mold and mildew.

**Solution:** Seal-Once stops the production of mold/mildew on wood, composite decking and concrete.

**Removal of Existing Mold/Mildew:** Use New Images Coatings All Wood Cleaner. Scrub the infected area with the cleaning mixture and a scrub brush and rinse with garden hose or pressure washer no more than 1250 psi using wide fan pattern. Leave solution on concrete for 15 to 20 minutes. You can re-apply if needed.

**Application of Seal-Once:** Once substrate is fairly dry and clean, apply two coats of Seal-Once wet on damp (do not allow to dry between coats). You should apply three coats if the wood, composite decking or concrete is aged and very porous.

**Results:** The mold and mildew has undoubtedly penetrated the wood, composite decking or concrete and will continue to come to the surface for some time. Seal-Once allows water vapor transmission to occur thus allowing the trapped moisture to rise to the surface. Apply another solution of water/bleach/dawn and wash mold away. Continue this until mold/mildew is gone. Do not reapply Seal-Once. No additional water will be able to penetrate from the surface because the wood, composite decking or concrete is now protected by Seal-Once. In time, the mold and mildew will dry up. This process could take several months to occur.

### Can Seal-Once prevent airborne mold?

Seal-Once cannot prevent airborne mold. But what it will do is prevent the mold from attaching itself to the wood and concrete because there is not enough moisture present to allow the mold to anchor itself. The mold cannot survive and it will gray as it decomposes and will be easy to remove.

### What does “beading” really mean?

The Beading Myth – The more beading you see, the better your wood surface is waterproofed and protected. The truth is more beading indicates the applied product is sitting on top of the surface. It tells you it has not permeated deeply. That is why all leading brands of clear waterproofers suggest you reapply every year. The product does not permeate the surface and is washed away by the elements, or bleached out by the sun.

### How do we know that Seal-Once is so safe?

Seal-Once has been tested for acute toxicity by Huther Associates, a nationally known environmental testing organization located in Denton, Texas. The test species used were fish and shrimp larvae, as they are 1,000 times more susceptible to toxicity than a 6-inch goldfish.

During application, tests were conducted in liquid form, the result – no toxicity was found. Also, when materials treated with Seal-Once are immersed in fresh or salt water, they do not leech out, or become hydrolytically unstable. These are some of the reasons the State of New Hampshire supports use of this product throughout the state.

### How does Seal-Once provide such great protection?

Unlike today’s market leaders, Seal-Once base materials are newly developed, environmentally stable, and safe polymers. When looked at under a microscope, these materials are much smaller and lighter than today’s market leaders. In fact, Seal-Once measures 100 times smaller than a micron, roughly equivalent to a fraction of a millionth of an inch. Consequently, when applied to a wood or concrete surface, Seal-Once permeates the external surface more deeply, thereby sealing and protecting the surface for a longer period of time.

### Why do we recommend that you wait up to 6 months before waterproofing a pressure treated lumber surface?

Market leaders recommend waterproofing of pressure treated lumber as soon as 3 months. As you know pressure treated lumber is heavily treated with chemicals and other materials when it is manufactured. Also, pressure treated lumber is very dense. Because of these two factors pressure treated lumber is usually not ready to accept a waterproofing treatment at 3 months. However, the consumer following the advice given by the market leaders buys the product and takes the time to apply it. Because the pressure treated lumber has not dried out enough, it accepts a limited amount of the application, which as we know washes away relatively quickly. The consumer continuing to follow the instructions waits one to two years before the next application. During that period the wood dries, splits, cracks or warps because it has inadequate waterproofing protection.

So when should a sub micron waterproofer be applied to a pressure treated surface? Timing of application depends upon at least two factors. One is the weather. If you live in New England your wood surface is covered in snow for much of December through March. If you live in a southern state, your pressure treated lumber is subjected to constant sun.

So the elements play a key role in applying a sub micron waterproofer. The second factor is the readiness of the pressure treated lumber to accept a sub micron waterproofer treatment. The best way to test for readiness is to purposefully spill water on the surface to be treated. If it readily soaks in, the surface is ready. If it sits on the surface in a puddle or pool and does not soak in, it is not ready to be treated.

### Is Seal-Once a silicone, latex or acrylic?

Seal-Once is none of the above. Seal-Once is a deep penetrating, complex co-polymer. Competitor products are primarily surface treatments.

### Does Seal-Once permit masonry surfaces to breathe?

Seal-Once has excellent breathability characteristics. Trapped water will migrate out of the treated surface over a short period of time, up to ten days.

### What is meant by “let the surface tell you what treatment is necessary”?

Basically it tells us to test our surfaces before deciding best treatment.

Let's say you last sealed a surface one year ago. The surface looks dry or is cracking, splitting or warping. If you spill water on that surface and it immediately soaks in, the surface is telling you it needs additional waterproofing. If you notice after a rainstorm that the rain water is soaking into the wood, then additional waterproofing is necessary.

On the other hand if you spill water on a wood surface and it runs off the surface, then waterproofing is unnecessary, and as previously mentioned wasteful.

The same examples are true of concrete surfaces. If moisture is readily accepted into the substrate, then the concrete is ready to accept waterproofing.

### How do I get the most for my money when applying a waterproofer?

Follow these four simple steps:

1. Assure the surface is free of algae, mold, mildew, etc.
2. Assure the surface is ready to accept a waterproofer.
3. Apply when temperature is over 35°, air is dry, with no imminent rain.
4. Apply the waterproofer on a surface until it rejects further treatment. That is, apply the waterproofer until it stops soaking in. Older porous wood may accept three applications before the surface voids fill up. You do not need to wait until your first application has dried. Continue to apply product while the surface is damp.

### What is the difference between Seal-Once pigments and competitors' pigments?

Seal-Once pigments are UV stable and non toxic. They have been designed to react to UV light by converting UV energy into thermal energy. Competitors' pigments are made from organic materials. Organic materials deplete in up to 18 months as they are either washed away by the elements, or baked away by the sun. Also competitors' pigments are toxic.

### Does Seal-Once protect against hydrostatic pressure?

No.